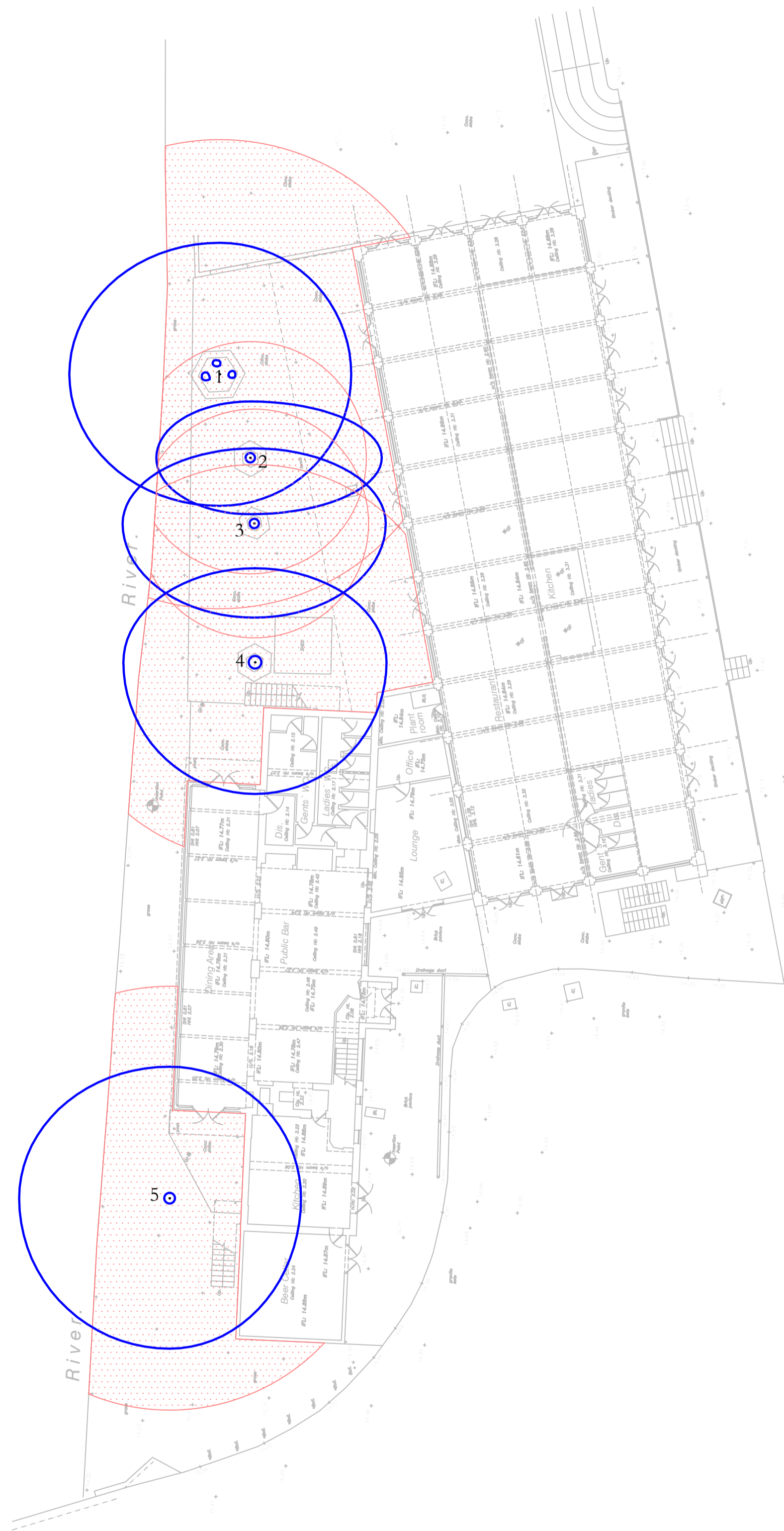
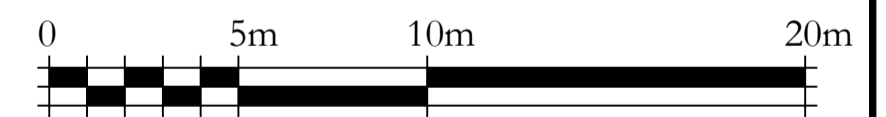




SURVEY OF TREES AT 20 WATERMILL WAY, LONDON																							
Tree No.	Species	Ht (m)	Branch Spread (m)				Single Stem	Stem diameters (cm)					Mean dia	No. stems	Height of crown clearance (m)	Height of first branch (m) and direction (compass point)	Age class	Category grading	Estimated remaining contribution (yrs)	Condition Physiological / Structural	Preliminary management recommendations	Root protection radius (m)	Root protection area sqm
			N	E	S	W		Stem 1	Stem 2	Stem 3	Stem 4	Stem 5											
1	Sycamore	13	7	7	7	8		42	56	25	26				3	2.5W	MI	B1	>20	Multi-stemmed with base concealed by timber seat.		9.45	281
2	Lime	16	3	7	3	5	51								5	5E	MI	B1	>20	Part of a group of 3 trees of similar proportions. Base concealed by timber seat. Possibly previously pollarded at circa 6 metres above ground level and allowed to regrow.		6.12	118
3	Lime	17	4	7	5	7	51								2	4W	MI	B1	>20	Part of a group of 3 trees of similar proportions. Base concealed by timber seat. Possibly previously pollarded at circa 6 metres above ground level and allowed to regrow.		6.12	118
4	Lime	17	5	7	7	7	67								5	4S	MI	B1	>20	Part of a group of 3 trees of similar proportions. Base concealed by timber seat. Possibly previously pollarded at circa 6 metres above ground level and allowed to regrow.		8.04	203
5	Sycamore	14	7	7	8	8	57								2	2.5E	MI	B1	>20	Broad spreading tree of free form. Some past damage to east side of stem now repairing.		6.84	147



Column Heading	Explanation
TPD No	If applicable and where known
Tree No.	Unique number corresponding with number on plan
Species	English names
Ht (m)	Height in metres
Branch Spread	Crown radius in metres to cardinal points of the compass
Stem Dia	All measurements conform to Annex C of BS 5837:2012
Height of crown clearance	Single stem - Stem diameter in centimetres measured at 1.5m above ground level. Multi-stemmed tree with 2 to 5 stems - Diameter of each stem
Height of first major branch	Multi-stemmed tree with more than 5 stems - Average stem diameter and number of stems
Branch and direction of growth	Height in metres between the ground and underside of canopy
Abbreviations as suffix to a dimension	Height from ground level to base of first major branch and the approximate direction of growth
Age Class	Suffix 'v' denotes an estimated dimension
Category grading and Estimated remaining Contribution (yrs)	Suffix 'av' denotes an average dimension
Estimated remaining contribution	Age Class definitions: Y = less than one third natural life span spent MI = between one third and two thirds natural life span M = greater than two thirds life span completed OM = overmature V = veteran
Condition	Summary of BS 5837: 2012 categorisation:
Preliminary management recommendations	1. Trees unsuitable for retention: U = those in such a condition that they cannot realistically be retained as living trees in the context of the current land use for longer than 10 years
Root Protection Radius	2. Trees to be considered for retention: A1, 2 or 3 = trees of high quality (substantial contribution >40 yrs) B1, 2 or 3 = trees of moderate quality (significant contribution >20 yrs) C1, 2 or 3 = trees of low quality (but adequate, ie >10 yrs or young trees - until new planting can be established)
Root Protection Area	Useful estimated remaining contribution of the tree or tree group
	Brief description including physiological and structural defects
	Describes current arboricultural requirement for the tree in its current context
	Radius of minimum root protection area in metres calculated from section 4.6 and Annex D
	Total area of minimum root protection area extrapolated from root protection radius



Key:

- Trees to be considered for retention:
 - Tree Category A 1,2 or 3 - trees of high quality
 - Tree Category B 1,2 or 3 - trees of moderate quality
 - Tree Category C 1,2 or 3 - trees of low quality
- Trees unsuitable for retention:
 - Tree Category U - trees that cannot realistically be retained due to their condition
- Protected areas:
 - Root Protection Area (RPA)
- Tree numbering
 - Tree number - refer to schedule for information

CLIENT:	Faucet Inns Limited
PROJECT:	20 Waremill Way, London
TITLE:	Tree Constraints Plan
DRAWING NUMBER:	8406/01
STATUS:	For Information
DATE:	May 2014
DRAWN BY:	ML
SCALE:	1:200 @ A1
CHECKED BY:	JTK
Do not scale from this drawing: All dimensions to be checked on site	
The copyright of this document resides with Ian Keen Limited unless assigned in writing by the company	
<p style="text-align: center;">I AN KEEN LIMITED</p> <p style="text-align: center;"><i>Consultants for Trees, Landscapes and Nature Conservation</i></p> <p style="text-align: center;">Redlands Farm, Redlands Lane, Woburn, Farnham, Surrey GU10 5AS Telephone: 01252 859096 Facsimile: 01252 851702 Email: mail@ikeye.co.uk</p>	

Note:
The original of this drawing was produced in colour - a monochrome copy should not be relied upon.

Tree survey based on Greenhatch Group drawing number 19996_01_P.

This page is intentionally left blank